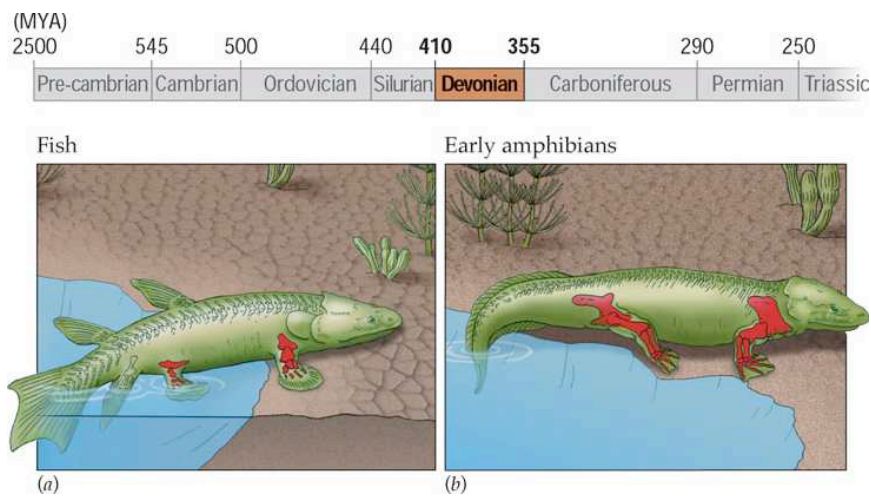


- The US was pretty much covered in water and North America started rotating during the Ordovician.
- A clastic wedge is a big pile of sediments that eroded off a mountain that are still there.
- During the late Silurian/early Devonian the Caledonian Orogeny occurred and Laurasia was formed.
- The Michigan Basin consists of limestone surrounded by reef fossils, this shows evidence of that evaporation was occurring more rapidly than could be replenished.
- During the Middle part of the Paleozoic radiation of fish occurred.
- The 1st amphibians appeared in the Devonian. You can tell that the first amphibians were closely related to lobefish by their similar bone structure.



<http://bio100.nicerweb.com/Locked/media/ch22/DB22050.jpg>

- During the middle of the Paleozoic the sea level was rising due to the Ice Age ending. There were lots of extinctions, which opened up new opportunities for new species to form. Then the Ice Age re-emerged which forced more species on to land.
- During the Pennsylvanian Pangaea formed and big polar ice caps with it.
- Cyclothems (rapid change in sea level) occurred.
- During the late Proterozoic the Amniotic egg was made. As a result the 1st reptiles emerged.