



Microelectronics

www.pcc.edu/programs/mt
microelec@pcc.edu
971-722-7255



**Portland
Community
College**

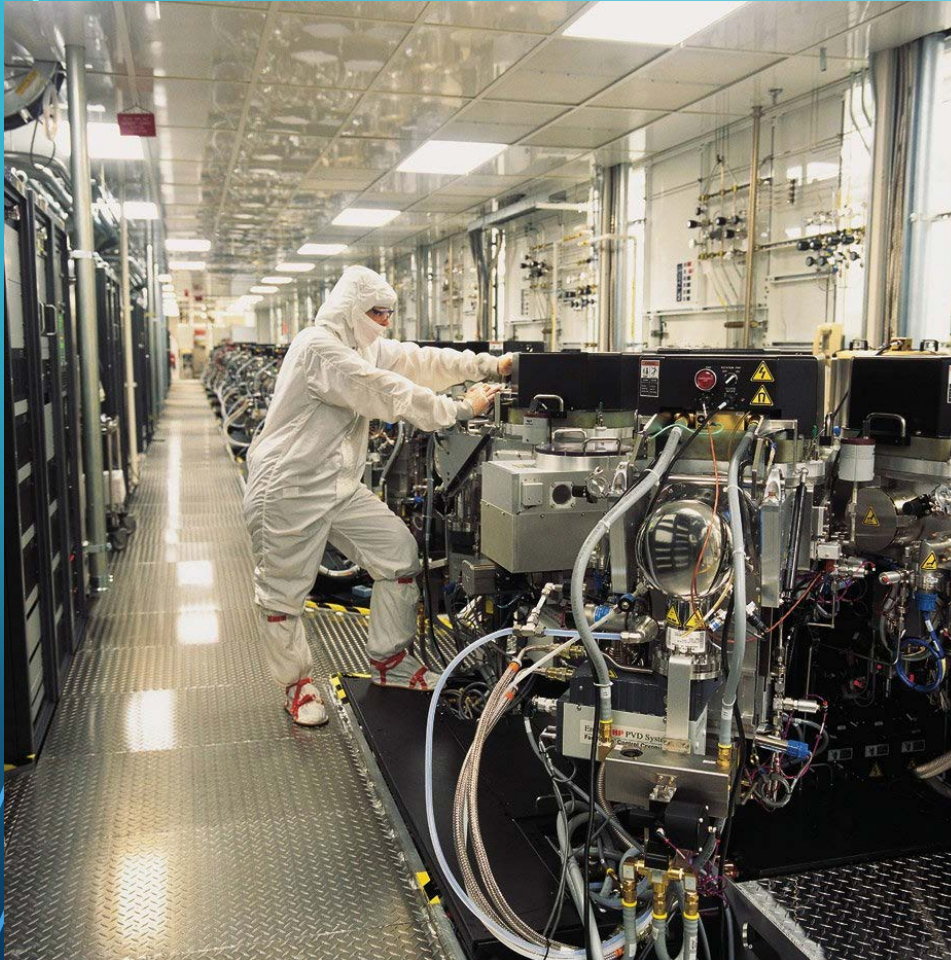
PORTLAND COMMUNITY COLLEGE
ERIC KIRCHNER

...ABOUT MICRO- ELECTRONICS TECHNOLOGY



- We help students to become technicians in the microelectronics and solar industries
- We are a 2 year/associate of applied science degree program

EQUIPMENT/MAINTENANCE TECH



- Compressed workweek
- Clean/structured environment
- Tuition benefits
- Local history

Semiconductor Manufacturing Process



Depositing

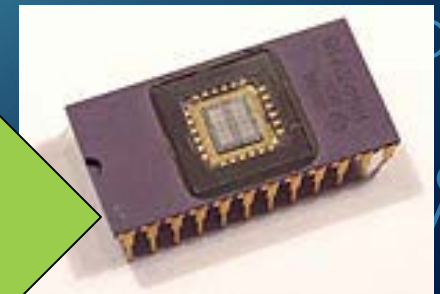
Etching



Doping



Patterning

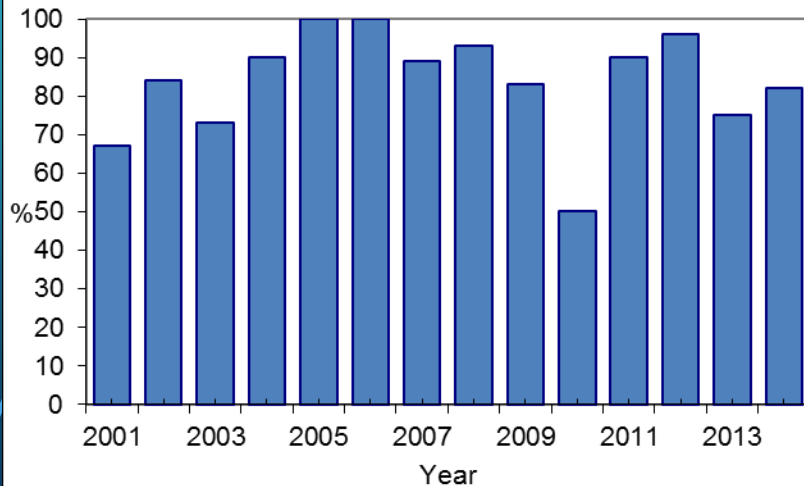


THE MT ADVANTAGE

- Strong demand for MT graduates from local industries:



MT Graduate Employment
and Continuing Education Rate



- Starting salary: \$40,000 ~ \$45,000
- Typical technician salary: \$50k ~ \$60k
- Highly experienced technician salary up to \$90k



WHAT'S NEXT?

- Contact Eric Kirchner—MT chair/advisor
- We recommend the following courses:
 - MT101-103 Intro to MT
 - MT111 Analog Circuit I
 - MT121 Digital Circuit I
 - MTH 95, MTH111
 - WR121, WR227

Open House (7/133):

Weds. 11/9, 10-11 AM

Thurs. 11/10 12-1 PM

Tues. 11/15 5-6 PM

Weds. 11/16 5-6 PM

Tues. 11/22 12-1 PM

Weds. 11/30 12-1 PM

Tues. 12/6 5:30-6:30 PM

Weds. 12/14 12-1 PM

