

Experiment: The Magnetic Field in a Slinky

OBJECTIVES

- Determine the relationship between magnetic field, the current in a solenoid and the number of turns per meter in a solenoid.
- Observe how the field varies inside and outside a solenoid.
- Determine the value of μ_0 , the permeability constant.

MATERIALS

- | | |
|---------------------------------|----------------------------|
| • Windows-based PC | • meter stick |
| • LabPro interface | • DC power supply |
| • Logger Pro | • ammeter |
| • Vernier Magnetic Field Sensor | • <i>cardboard spacers</i> |
| • Slinky® | • connecting wires |
| • Graphical Analysis | • tape and cardboard |

INTRODUCTION

A solenoid is made by taking a tube and wrapping it with many turns of wire. A metal Slinky® is the same shape and will serve as our solenoid. When a current passes through the wire, a magnetic field is present inside the solenoid. Solenoids are used in electronic circuits or as electromagnets.

In this lab we will explore factors that affect the magnetic field inside the solenoid and study how the field varies in different parts of the solenoid. By inserting a Magnetic Field Sensor between the coils of the Slinky, you can measure the magnetic field inside the coil. You will also measure μ_0 , the permeability constant. The permeability constant is a fundamental constant of physics.

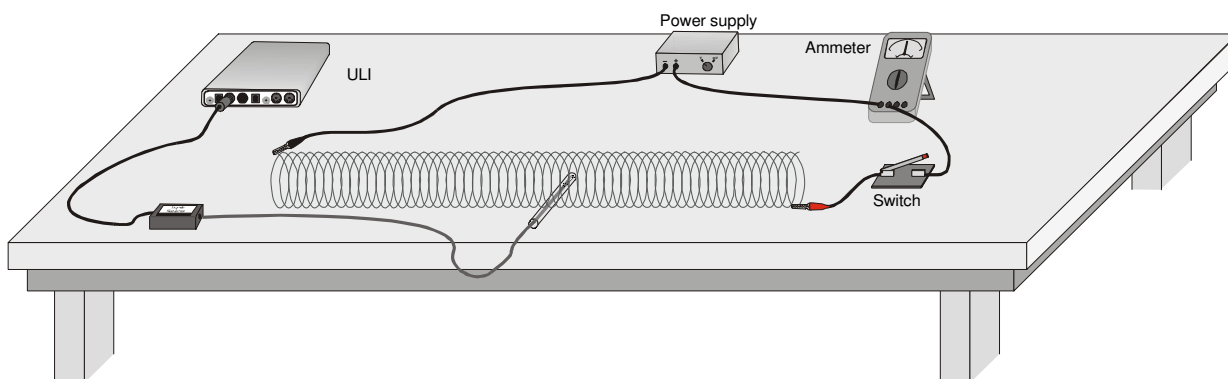


Figure 1

INITIAL SETUP

1. Connect the Vernier Magnetic Field Sensor to the LabPro interface. Set the switch on the sensor to *High*.

2. Stretch the Slinky until it is a little over 1 m in length. The distance between the coils should be about 1 cm. Use a non-conducting material (tape, cardboard, etc.) to hold the Slinky at this length.
3. Set up the circuit and equipment as shown in Figure 1. Wires with clips on the end should be used to connect to the Slinky. The clips should be separated by about 1.0 m.
4. Turn on the power supply and adjust it so that the ammeter reads 2.0 A when the switch is held closed.

Warning: *This lab requires fairly large currents to flow through the wires and Slinky. Only close the switch so the current flows when you are taking a measurement. The Slinky, wires, and possibly the power supply may get hot if left on continuously.*

5. Open the LoggerPro experiment file: "26 Mag Field Slinky", or equivalent.

PRELIMINARY QUESTIONS

1. Hold the switch closed. The current should be 2.0 A. Place the Magnetic Field Sensor between the turns of the Slinky near its center. Rotate the sensor and determine which direction gives the largest magnetic field reading. What direction is the white dot on the sensor pointing?
2. What happens if you rotate the white dot to point the opposite way? What happens if you rotate the white dot so it points perpendicular to the axis of the solenoid?
3. Stick the Magnetic Field Sensor through different locations along the Slinky to explore how the field varies along the length. Always orient the sensor to read the maximum magnetic field at that point along the Slinky. How does the magnetic field inside the solenoid seem to vary along its length?
4. Check the magnetic field intensity just outside the solenoid.

PROCEDURE

Part I: How Is The Magnetic Field In A Solenoid Related To The Current?

For the first part of the experiment you will determine the relationship between the magnetic field at the center of a solenoid and the current flowing through the solenoid. As before, leave the current off except when making a measurement.

1. Place the Magnetic Field Sensor between the turns of the Slinky near its center.
2. Close the switch and rotate the sensor so that the white dot points directly down the long axis of the solenoid. This will be the position for all of the magnetic field measurements for the rest of this lab.

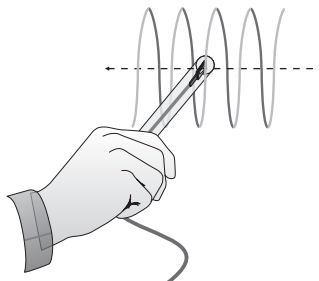
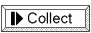
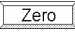


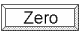




Figure 2

3. Click  to begin data collection. Wait a few seconds and close the switch to turn on the current.
4. If the magnetic field increases when the switch is closed, you are ready to take data. If the field decreases when you close the switch, rotate the Magnetic Field Sensor so that it points the other direction down the solenoid.
5. With the Magnetic Field Sensor in position and the switch open, click on the Zero button, , to zero the sensor and remove readings due to the Earth's magnetic field, any magnetism in the metal of the Slinky, or the table.
6. Adjust the power supply so that 0.5 A will flow through the coil when the switch is closed.
7. Click  to begin data collection. Close the switch for at least 10 seconds during the data collection.
8. Observe the Field vs. Time graph. Determine the average field strength while the current was on using the Statistics button, . Record the average field in the data table.
9. Increase the current by 0.5 A and repeat Steps 7 and 8.
10. Repeat Step 9 up to a maximum of 2.0 A.
11. Count the number of turns of the Slinky and measure its length. *If you have any unstretched part of the Slinky at the ends, do not count it for either the turns or the length.* Calculate the number of turns per meter of the stretched portion. Record the length, turns, and the number of turns per meter in the data table.

Part II: How is the Magnetic Field in a Solenoid Related to the Spacing of the Turns?

For the second part of the experiment, you will determine the relationship between the magnetic field in the center of a coil and the number of turns of wire per meter of the solenoid, for constant current. Leave the Slinky set up as shown in Figure 1. The sensor will be oriented as it was before, so that it measures the field down the middle of the solenoid. You will be changing the length of the Slinky from 0.75 to 2.0 m to change the number of turns per meter.

1. Adjust the power supply so that the current will be 1.5 A when the switch is closed.
2. With the Magnetic Field Sensor in position, but no current flowing, click  to zero the sensor and remove readings due to the Earth's magnetic field and any magnetism in the metal of the Slinky. Since the Slinky is made of an iron alloy, it can be magnetized itself. Moving the Slinky around can cause a change in the field, even if no current is flowing. This means you will need to zero the reading each time you move or adjust the Slinky.
3. Click  to begin data collection. Close and hold the switch for about 10 seconds during the data collection. As before, leave the switch closed only during actual data collection.
4. View the field vs. time graph and determine where the current was flowing in the wire. Select this region on the graph by dragging over it. Find the average field while the current was on by clicking on the Statistics button, . Count the number of turns of the Slinky and measure its length. If you have any un-stretched part of the Slinky at the ends, do not count it for either the turns or the length. Record the length of the Slinky and the average field in the data table.
5. Repeat Steps 2 – 4 after changing the length of the Slinky to .75 m, 1.5 m, 1.75 and 2.0 m. **Note:** Be sure to zero the Magnetic Field Sensor with the current off before each data collection. Make sure that the current remains at 1.5 A each time you turn connect the circuit.

DATA TABLE

Part I

Current in solenoid I (A)	Magnetic field (mT)
0.5	
1.0	
1.5	
2.0	
Length of solenoid (m)	
Number of turns	
Turns/meter, n (m^{-1})	

Part II

Length of solenoid (m)	Turns/meter n (m^{-1})	Magnetic field B (mT)

Number of turns in Slinky	
----------------------------------	--

ANALYSIS

1. Using Graphical Analysis, plot a graph of magnetic field B vs. the current I through the solenoid.
2. How is magnetic field related to the current through the solenoid?
3. Determine the equation of the best-fit line, including the y -intercept. Note the constants and their units.
4. For each of the measurements of Part II, calculate the number of turns per meter. Enter these values in the data table.
5. Using Graphical Analysis, plot a graph of magnetic field B vs. the turns per meter of the solenoid (n).
6. How is magnetic field related to the turns/meter of the solenoid?
7. Determine the equation of the best-fit line to your graph. Note the constants and their units.

8. From Ampere's law, it can be shown that the magnetic field B inside a long solenoid is

$$\mathbf{B} = \mu_0 n \mathbf{I}$$

where μ_0 is the permeability constant. Do your results agree with this equation? Explain.

9. Assuming the equation in the previous question applies for your solenoid, calculate the value of μ_0 using your graph of B vs. n .

10. Look up the value of μ_0 , the permeability constant. Compare it to your experimental value.

11. Was your Slinky positioned along an east-west, north-south, or on some other axis? Will this have any effect on your readings?